

G200

Horizontal Engine

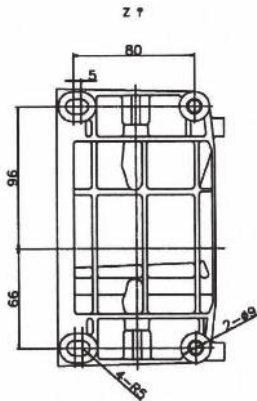
Loncin



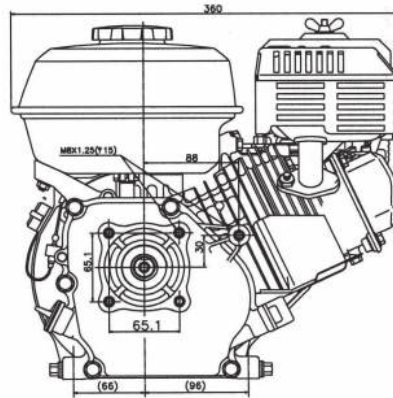
- Durable, Loncin Horizontal Engine
- High performance rating
- Electric start optional
- Low noise level
- Fuel efficient running
- All standard engine mount shafts available

Specifications

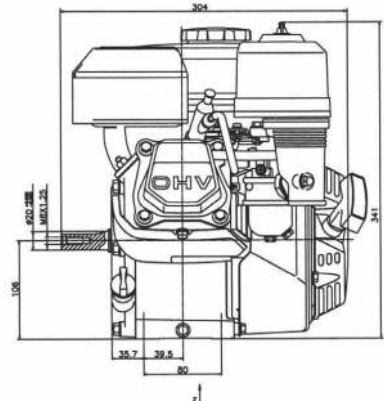
Bottom View



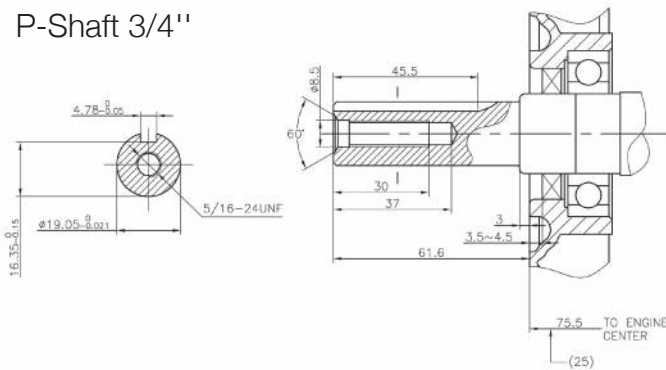
Front View



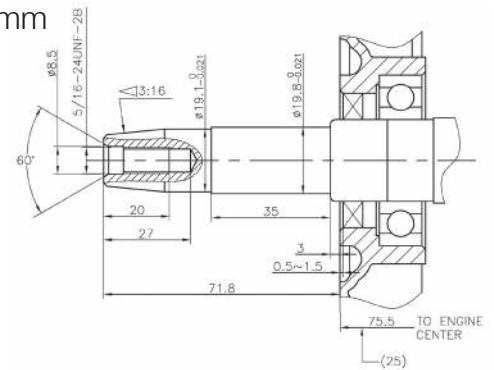
Side View



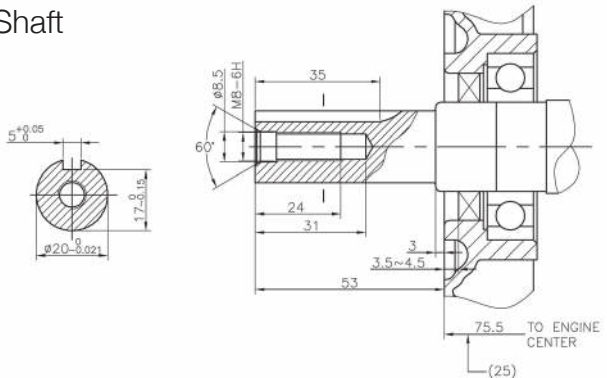
P-Shaft 3/4"



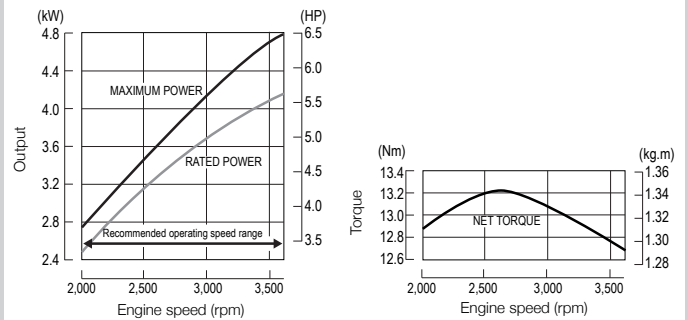
M-Shaft 20mm



G-Shaft



Power Curves



	G200F
Engine	Single cylinder, 4 stroke, OHV, forced air cooled
Net Power	5.5 hp / 4.1 kW @ 3600 rpm
Gross Power	6.5 hp / 4.85 kW @ 3600 rpm
Maximum Torque	12.4 Nm @ 2500 rpm
Starting System	Recoil Start (electric option)
Ignition System	Transistor Electric, Inductive firing
Displacement	196 cc
Fuel Consumption	≤ 395 g/kW h
Fuel Tank Capacity	3.61 litres
Oil Capacity	0.6 litres
Noise Level (≤ 7m)	70 db (A)
Continuing Operation Hours	2.95
Bore x Stroke	68 mm x 54 mm
Compression Ratio	8.5 : 1
Lubrication System	Splash
Air Cleaner	Semi-dry, oil bath, foam filter
Dimension (L x W x H)	376 mm x 312 mm x 335 mm
Dry Weight	16 kg



E. P. Barrus Ltd., Launton Road, Bicester, Oxfordshire, OX26 4UR
 t: 01869 363644 f: 08714 291160 e: michael.kennedy@barrus.co.uk

Distributed & Supported by



www.barrus.co.uk